

VKA FIRS TURN

The Official Vintage Karting Association Magazine

Feb/Mar 2017

Rolf Hill, Editor



www.VKAkarting.com
www.facebook.com/VintageKartingAssociation



Yamaha RLV Pipe ARTICLE

Revision 1

From VKA FirsTurn[®] MMXVII – No. 2

VKA Logo Courtesy of Tom Medley

© 2017 Vintage Karting Association, Inc. All rights reserved. No part may be reproduced, in any form, without explicit, written permission from the Vintage Karting Association.

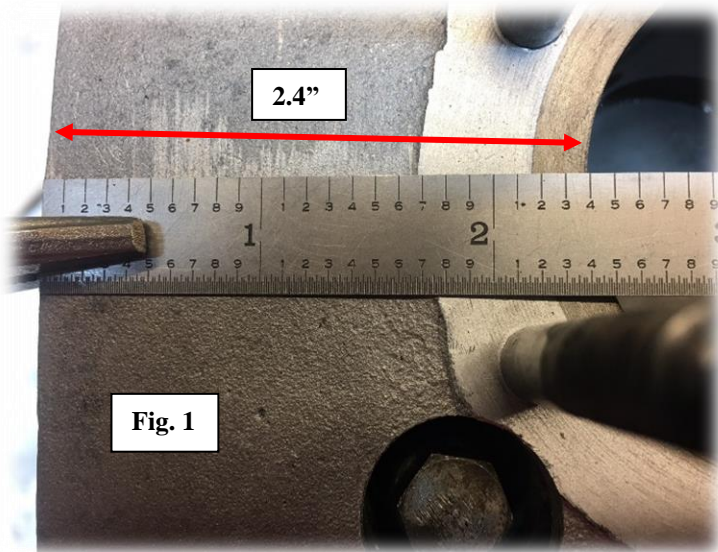
YAMMY CLASS 17 RLV PIPES BY LYNN HADDOCK

The approved RLV **PIPES** for the Yamaha Limited Class (#17) are the VKA-K1, VKA-K2 and the VKA-SR-Y.

These are the same pipes as the older model KPV K1 and K2 and the WKA/IKF SR-Y. These are readily available in the used market.

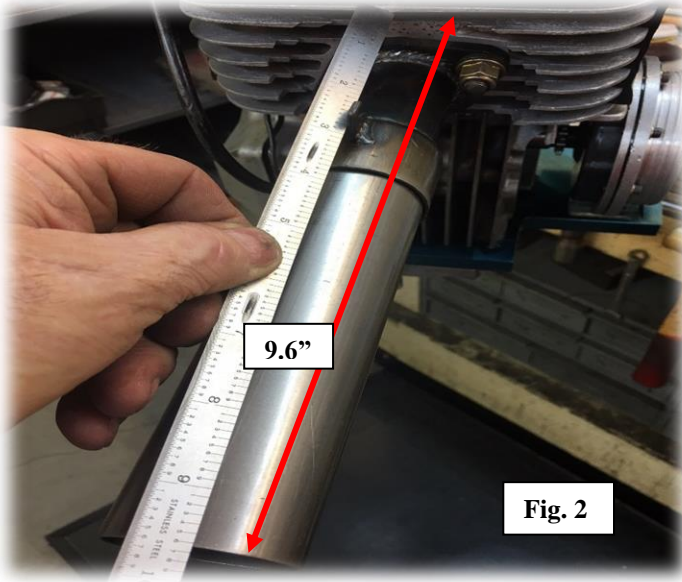
The current RLV **HEADERS** are the VKA-9110 (12 degrees) and the VKA-9110 (straight). However, any straight tube header may also be used. **No tapered tube headers are allowed!**

The **minimum** length for all the pipes is 12" from the piston face to the start of the first cone. For convenience, the edge of the fin just above the exhaust (see **Fig. 1**, below) is 2.4" from the piston.



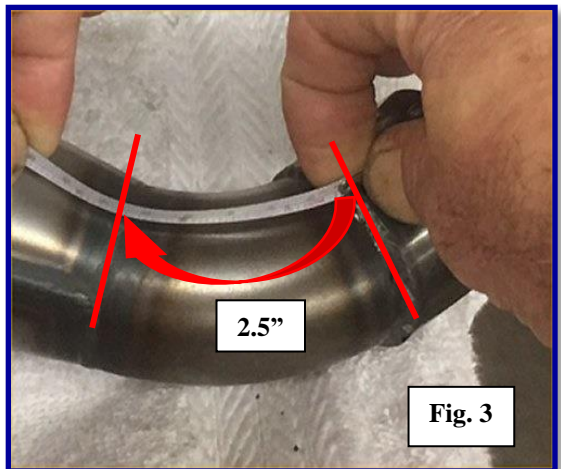
FOR THE 90° PIPE

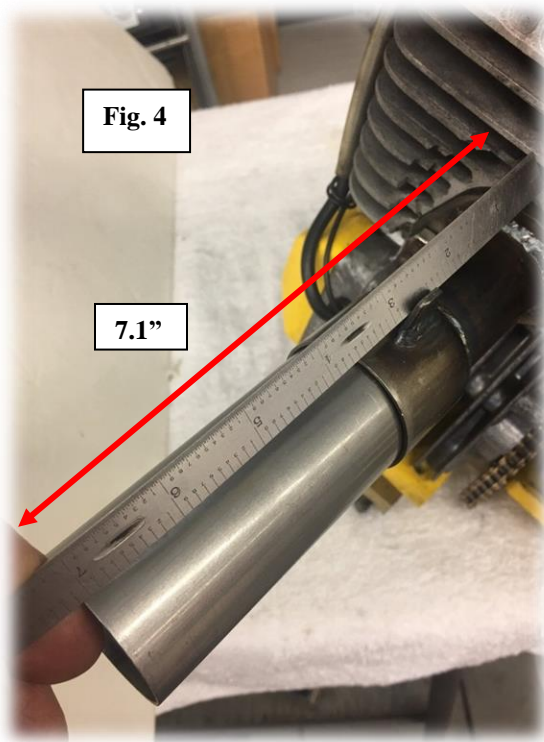
For the 90° models (K1+K2), this means, in order to have a minimum distance from the piston face to the end of the connector tube as 12", the connector dimension has a combination of 2.4" + 9.6" = 12" (see **Fig. 2**, below).



FOR THE 60°/30° PIPE

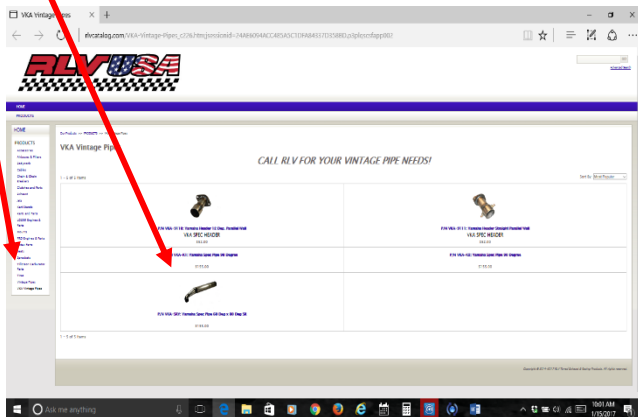
Unlike the 90° model, the 60°/30° model has 2.5" of distance is made into the 60°/30° elbow (see **Fig. 3**), so the distance from the piston to the end of the connector tube is 9.5" (2.4" + 7.1") minimum (see **Fig. 4**) and the overall minimum distance is 12" (2.4" + 7.1" + 2.5" = 12").





There is no maximum length for any header. The connector tube is 1.750" diameter.

For information on the RLV pipes go to: www.RLVcatalog.com. On the left, at the bottom, click on **VKA Vintage Pipes**. This page with the 90° and 60°/30° pipes will come up.



RLV PIPE CLARIFICATION BY LYNN HADDOCK

Several questions have arisen regarding the RLV pipe and the proper installation. Below is a picture of the 90° pipe (**Fig. A**) and the correct, minimum length of the connector tube (**Fig. B**)

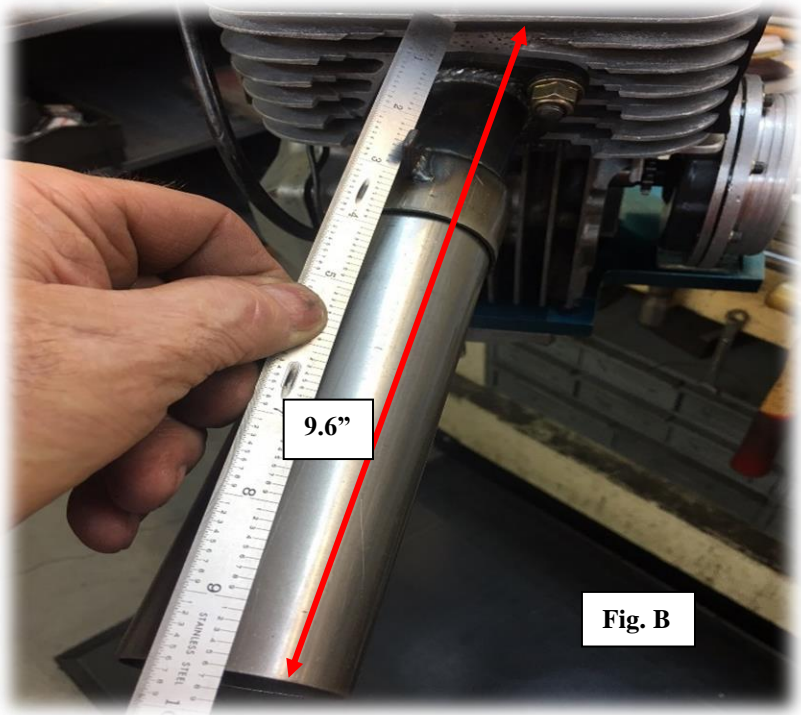


Fig. C shows the 60°/30° pipe, and **Fig. D** shows the proper installation of the minimum connector tube.

