

# VKA FIRS TURN

The Official Vintage Karting Association Magazine

Feb/Mar 2017

Rolf Hill, Editor



[www.VKAkarting.com](http://www.VKAkarting.com)  
[www.facebook.com/VintageKartingAssociation](https://www.facebook.com/VintageKartingAssociation)



Revision 1

## Yamaha RLV Pipe ARTICLE

From VKA FirsTurn<sup>®</sup> MMXVII – No. 2

VKA Logo Courtesy of Tom Medley

© 2017 Vintage Karting Association, Inc. All rights reserved. No part may be reproduced, in any form, without explicit, written permission from the Vintage Karting Association.

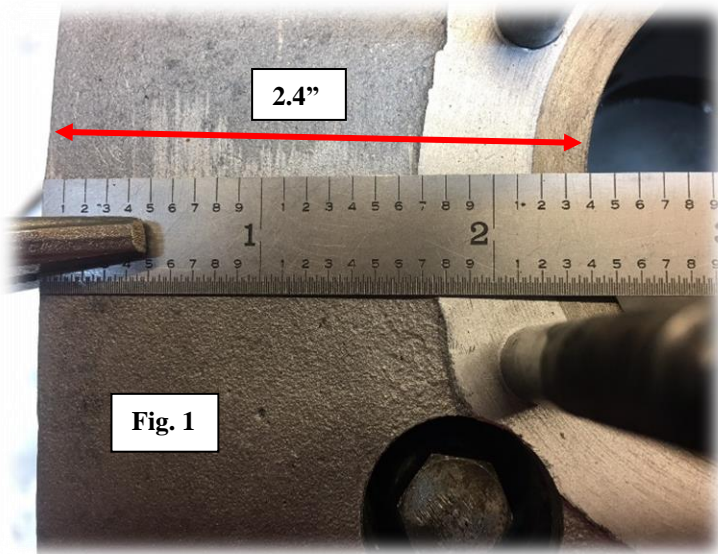
## YAMMY CLASS 17 RLV PIPES BY LYNN HADDOCK

The approved RLV **PIPES** for the Yamaha Limited Class (#17) are the VKA-K1, VKA-K2 and the VKA-SR-Y.

These are the same pipes as the older model KPV K1 and K2 and the WKA/IKF SR-Y. These are readily available in the used market.

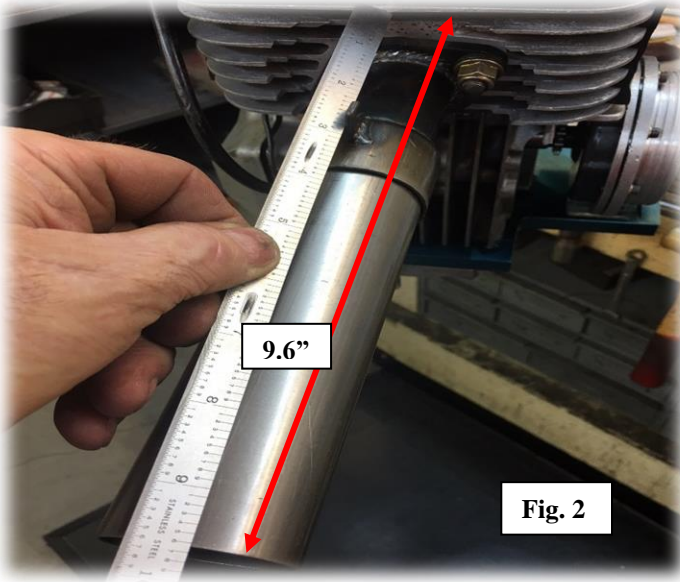
The current RLV **HEADERS** are the VKA-9110 (12 degrees) and the VKA-9110 (straight). However, any straight tube header may also be used. **No tapered tube headers are allowed!**

The **minimum** length for all the pipes is 12" from the piston face to the start of the first cone. For convenience, the edge of the fin just above the exhaust (see **Fig. 1**, below) is 2.4" from the piston.



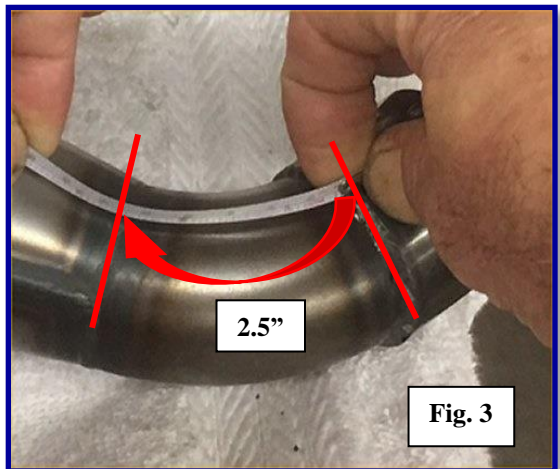
## **FOR THE 90° PIPE**

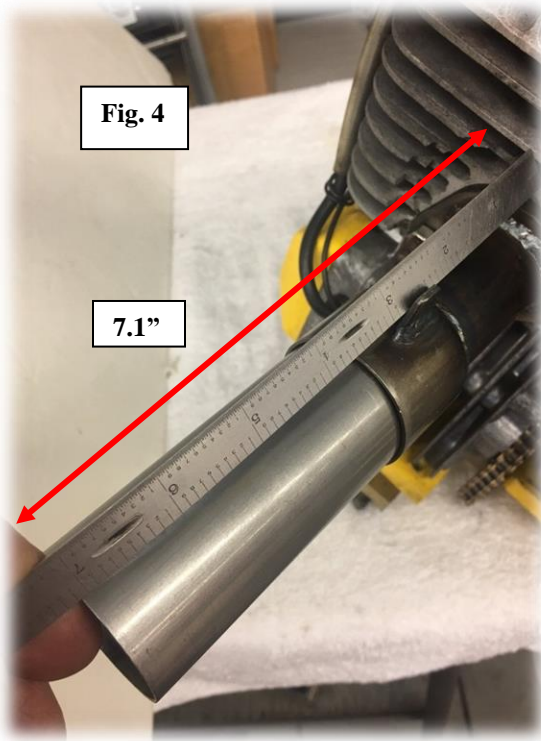
For the 90° models (K1+K2), this means, in order to have a minimum distance from the piston face to the end of the connector tube as 12", the connector dimension has a combination of 2.4" + 9.6" = 12" (see **Fig. 2**, below).



## **FOR THE 60°/30° PIPE**

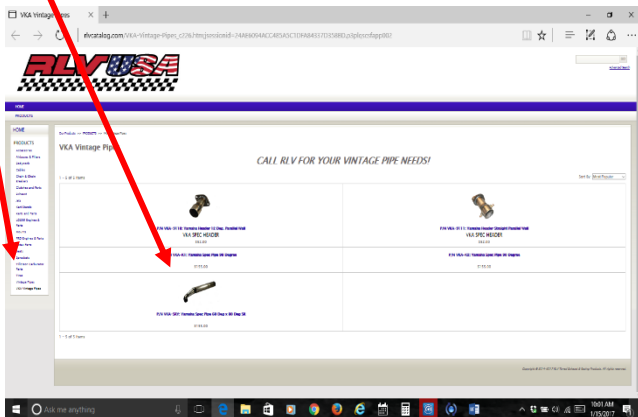
Unlike the 90° model, the 60°/30° model has 2.5" of distance is made into the 60°/30° elbow (see **Fig. 3**), so the distance from the piston to the end of the connector tube is 9.5" (2.4" + 7.1") minimum (see **Fig. 4**) and the overall minimum distance is 12" (2.4" + 7.1" + 2.5" = 12").





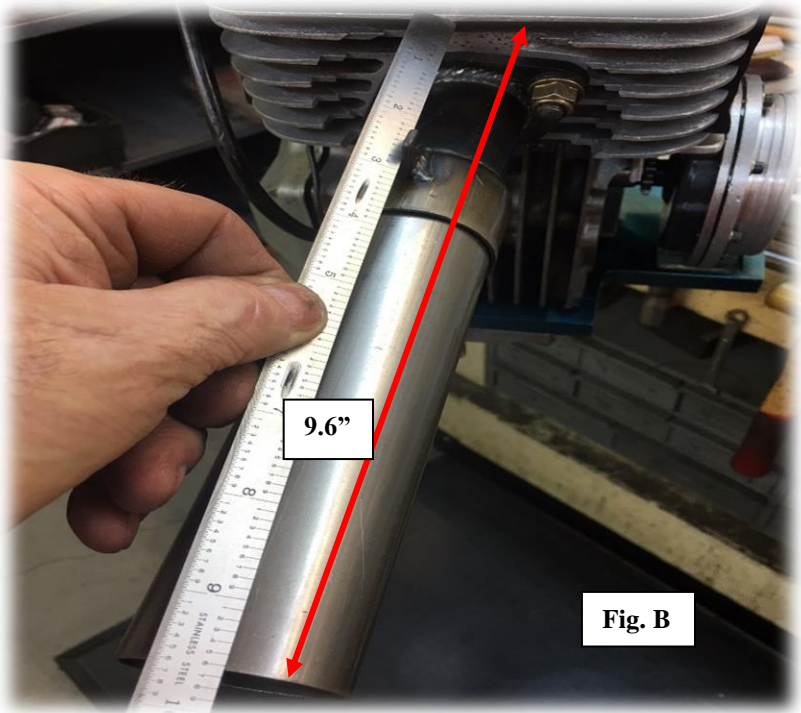
There is no maximum length for any header. The connector tube is 1.750" diameter.

For information on the RLV pipes go to: [www.RLVcatalog.com](http://www.RLVcatalog.com). On the left, at the bottom, click on **VKA Vintage Pipes**. This page with the 90° and 60°/30° pipes will come up.



## RLV PIPE CLARIFICATION BY LYNN HADDOCK

Several questions have arisen regarding the RLV pipe and the proper installation. Below is a picture of the 90° pipe (**Fig. A**) and the correct, minimum length of the connector tube (**Fig. B**)



**Fig. C** shows the 60°/30° pipe, and **Fig. D** shows the proper installation of the minimum connector tube.

